

The World's Tallest Manmade Structure Will Be Overrun By Plants



MAIL

TWEET

LIKE

The Mile is like a vertical Central Park, twisted and turned 90 degrees

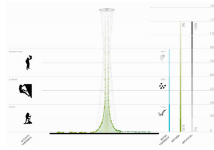
RACHEL PINCUS
11 MARCH 2016 CITIES

We seem to be in a golden era of innovative park design. Aside from utilizing abandoned infrastructure in an innovative way, like with the [Lowline](#) and the Highline in New York City, architects like [Carlo Ratti Associati](#) are putting their spatial and geometric imaginations to the test. Their creation, called [The Mile](#), could be the tallest manmade construction in the world—and also the greenest, with all its 1,609 meters of height covered in plants.

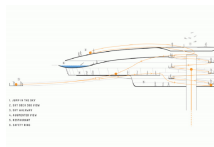


The tower, a project done on commission with a yet-undisclosed client, was designed with help from German engineer [Schlaich Bergermann Partner](#) and British design studio [Atmos](#). It would be populated with hundreds of different

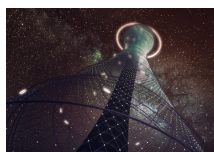
plant species, with the goal of creating a complete mini-ecosystem.



Though it would be planted from top to bottom, the building would also have a park at its apex, creating a fitting climax for a visitor. Visitors would travel upward in elevators designed like translucent capsules. The structure's imposing height meant a special engineering study that found it would have to be a lightweight structure supported by a network of pre-stressed cables.



Somewhat unusual for a building, the Mile was not designed with any particular city in mind. Director of MIT's Senseable City Lab and architect Carlo Ratti's works focus more on innovative ideas than adaptations to the culture of particular locations. As it dwarfs the Burj Khalifa, The Mile's height, however majestically planted, would most likely be accepted in a city known for the height of its buildings, like New York, Hong Kong or Shenzhen.



How would a building populated completely with plants be profitable? Ratti says he will explain this next month at the Cannes real estate fair **MIPIM**. The model for such a striking and