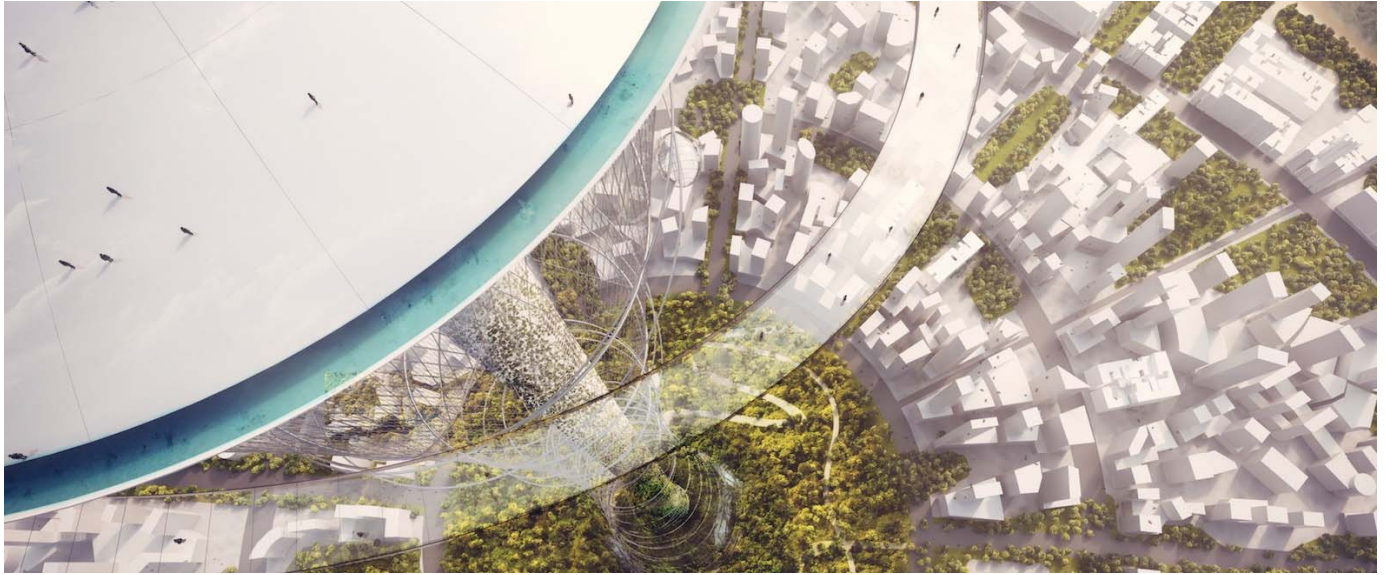


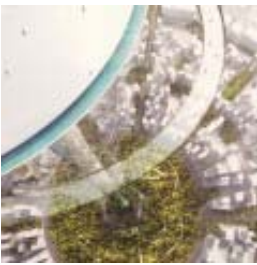
# CRA designs world's highest vertical park and observation deck



Share on Facebook Pin Tweet+

Skyscrapers aren't the only structures vying to enter the mile-high club. Italian studio [Carlo Ratti Associati](#) (CRA) unveiled designs for a one-mile high vertical park and observation deck that would be covered from base to apex in a lush natural ecosystem. The incredible proposal, called The Mile, would be inhabited by animals and accessible by people, and may be best visualized in Professor Carlo Ratti's words: "Imagine you take New York's Central Park, turn it vertical, roll it and twirl it."

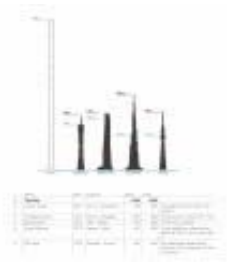
- 



- 



-



•



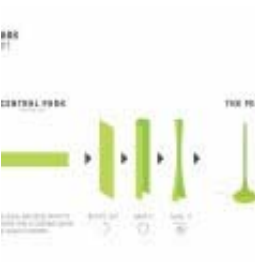
•



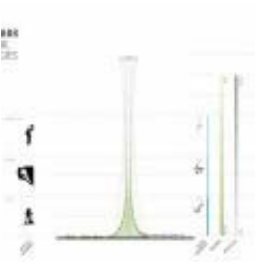
•



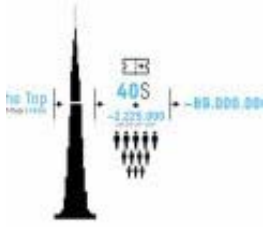
•



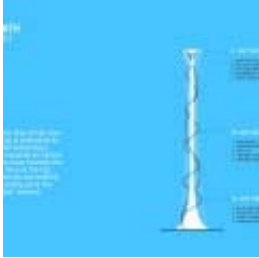
•



•



•



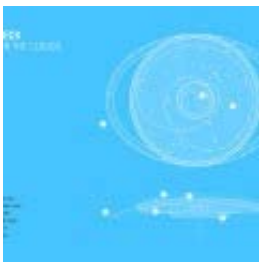
•



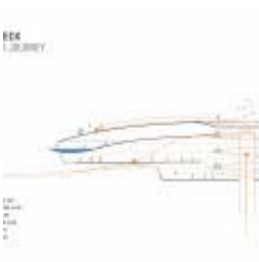
•



•

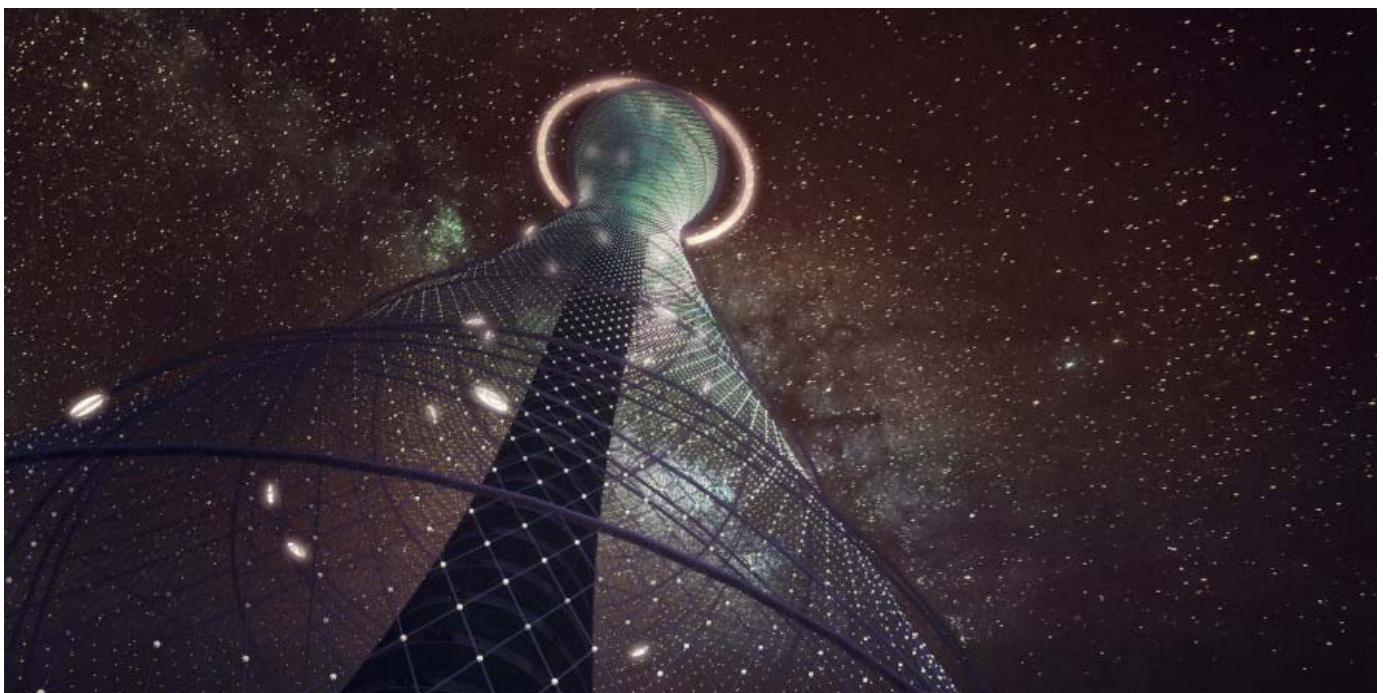


•





Designed in collaboration with German engineering firm [Schlaich Bergemann und Partner](#), and British digital design studio [Atmos](#), The Mile concept design is envisioned as a landmark “piazza of the sky,” where citizens and tourists can congregate, relax, and play. Currently, the tallest manmade structure is the 829.8-meter-tall [Burj Khalifa](#) in Dubai—Saudi Arabia’s in-progress [Jeddah Tower](#) will be 1,008 meters in height—but CRA says that their design could finally reach that mile-high (1,609 meter) goal thanks to Schlaich Bergemann und Partner’s research.



“The structural concept for The Mile is technically feasible because of its consequent and uncompromised light-weight approach,” says Boris Reyher, Associate and team leader at Schlaich Bergemann und Partner: “The architectural form and the spatial equilibrium of forces become one

and the same thing. On the one hand, this leads to an optimized usage of high-grade materials. On the other hand, the structural form and load paths become intuitively comprehensible by every spectator.”



The groundbreaking lightweight structure would comprise a 20-meter-wide shaft kept in compression and secured with a net of pre-stressed cables. Visitors who pay an entry fee of \$40 can ascend the structure via the panoramic lift or an orbiting capsule that leads to the sky deck with 360-degree panoramic views. A vertical garden wraps around the shaft and would be home to diverse flora and fauna. The project will be officially presented to the public at [MIPIM 2016](#), the world's leading real estate fair in Cannes on March 16, 2016.